



GAT MONTHLY MEMBERSHIP PROGRESS REPORT

Results as of: 2/28/2022

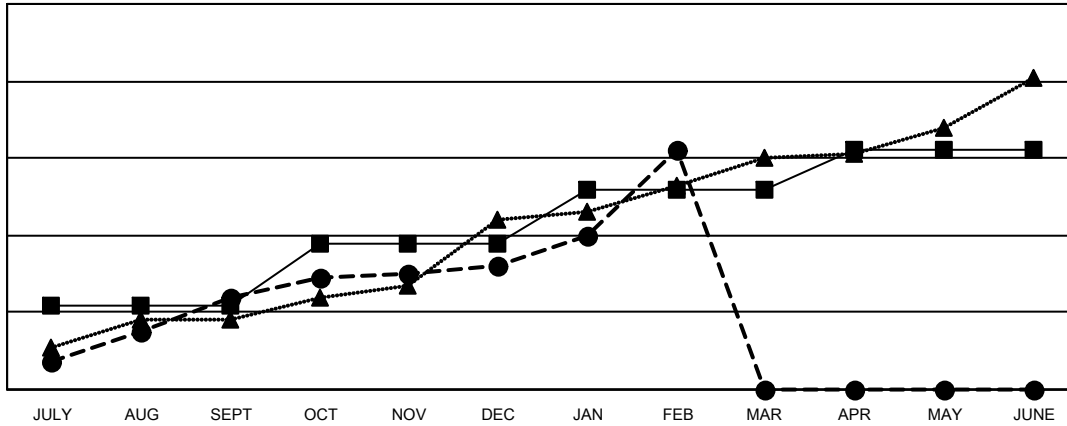
Multiple District 3233

LOCATION: INDIA

| Clubs | | | |
|-----------------------|---------------|-----------|---------------|
| RESULTS FOR 2021-2022 | | | |
| QUARTER | NEW CLUB GOAL | NEW CLUBS | DROPPED CLUBS |
| JULY/AUG/SEPT | 22 | 24 | 44 |
| OCT/NOV/DEC | 16 | 8 | 47 |
| JAN/FEB/MAR | 14 | 30 | 7 |
| APR/MAY/JUNE | 10 | 0 | 0 |

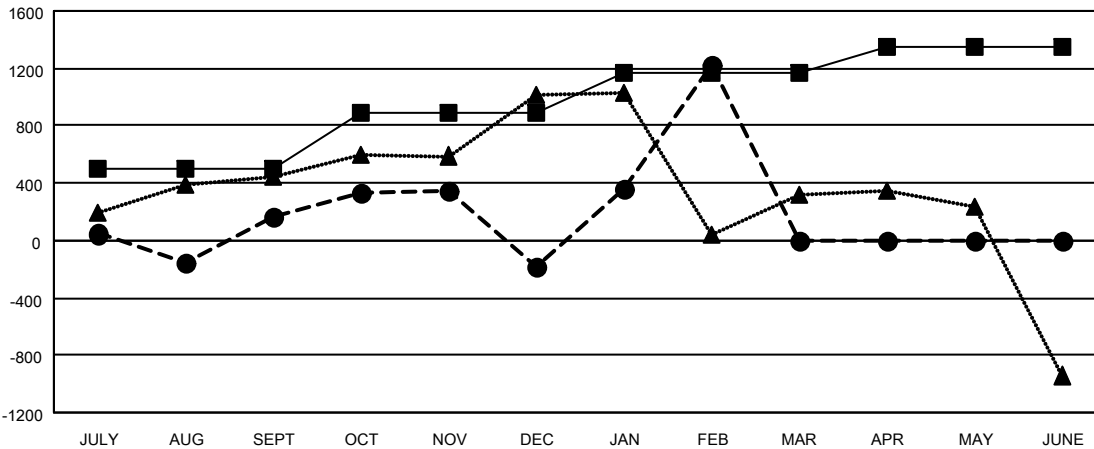
| Members | | | |
|-----------------------|------------------------|----------------------|--|
| RESULTS FOR 2021-2022 | | | |
| QUARTER | MEMBER GROWTH NET GOAL | MEMBER GROWTH ACTUAL | DROPPED MEMBERS ACTUAL (including transfers) |
| JULY/AUG/SEPT | 495 | 1,208 | 952 |
| OCT/NOV/DEC | 395 | 988 | 1,260 |
| JAN/FEB/MAR | 280 | 1,776 | 229 |
| APR/MAY/JUNE | 180 | 0 | 0 |

GOALS AND ACTUAL NEW CLUBS CUMULATIVE



- - CURRENT YEAR GOALS FOR NEW CLUBS
- - CURRENT YEAR ACTUAL NEW CLUBS
- ▲ - LAST YEAR ACTUAL NEW CLUBS

GOALS AND ACTUAL MEMBERS CUMULATIVE



- - MEMBER GROWTH NET GOAL
- - MEMBER GROWTH ACTUAL
- ▲ - LAST YEAR MEMBERSHIP ACTUAL

| | | | |
|---|---|--|-----------------|
| DROPPED CLUBS: 98 | 354 CLUBS OF 899 ADDED 1 OR MORE NEW MEMBERS | GENDER DISTRIBUTION | |
| DROPPED MEMBERS | | MALE | 14,031 (66.28%) |
| DECEASED | 39 | FEMALE | 7,127 (33.67%) |
| CLUB CANCELLED | 1,171 | NON BINARY | 0 (0.00%) |
| OTHER | 1,231 | PREFER NOT TO ANSWER | 12 (0.06%) |
| TOTAL | 2,441 | TOTAL FAMILY UNIT MEMBERS 9,755 | |
| CLICK HERE FOR CUMULATIVE MEMBERSHIP DATA | | FAMILY MEMBERS PAYING HALF DUES 5,557 | |